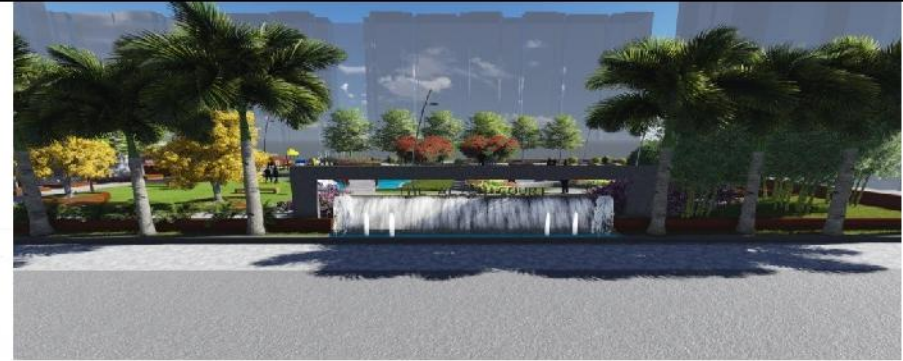


# "The Alien Court"

w.e.f. 01<sup>st</sup> August 2014

Luxurious 2/3 BHK Apartments

Price List: 3300 /- Per Sq. FT.



Construction Linked Plan (CLP)	
At the time of Booking	25%
After Casting Basement Slab	10%
After Casting Stilt Roof	5%
After Casting 1 <sup>st</sup> Floor Roof	5% of BSP (25% of Additional Charges)
After Casting 2 <sup>nd</sup> Floor Roof	5%
After Casting 3 <sup>rd</sup> Floor Roof	5%
After Casting 4 <sup>th</sup> Floor Roof	5% of BSP (25% of Additional Charges)
After Casting 5 <sup>th</sup> Floor Roof	5%
After Casting 6 <sup>th</sup> Floor Roof	5%
After Casting 7 <sup>th</sup> Floor Roof	5% of BSP (25% of Additional Charges)
After Casting 8 <sup>th</sup> Floor Roof	5%
After Casting 9 <sup>th</sup> Floor Roof	5%
After Casting 10 <sup>th</sup> Floor Roof	5% of BSP (25% of Additional Charges)
After Casting 11 <sup>th</sup> Floor Roof	5%
On Offer of Possession	5% of BSP +I.F.M.S

Perferential Location Charges (PLC)	
Green Belt Facing	Rs. 50/- Sq. Ft.
Corner	Rs. 50/- Sq. Ft.
Park or Pool Facing	Rs. 100/- Sq. Ft.
1st Floor	Rs.120/- Sq. Ft.
2nd Floor	Rs.120/- Sq. Ft.
3rd Floor	Rs. 100/- Sq. Ft.
4th Floor	Rs. 80/- Sq. Ft.
5th Floor	Rs. 60/- Sq. Ft.
6th Floor	Rs. 40/- Sq. Ft.
7th Floor	Rs. 60/- Sq. Ft.
8th Floor	Rs. 60/- Sq. Ft.
9th Floor	Rs. 60/- Sq. Ft.
10th Floor	Rs. 60/- Sq. Ft.
11th Floor	Rs.120/- Sq. Ft.

Additional Charges	
Covered Car Parking	Rs. 2,50,000
Club Membership	Rs. 50,000/-
Lease Money	Rs. 30/- Sq. Ft.
External Electrification Charge (EEC)	Rs. 30/- Sq. Ft.
Fire Fighting Charges (FFC)	Rs. 30/- Sq. Ft.
Internal Development Charge (IDC)	Rs. 60/- Sq. Ft.
Additional Power Backup Per KVA	Rs. 20,000 Per KVA
Interest Free Maintenance Security (IFMS)	Rs. 30/- Sq. Ft.
Maintenance Charges	As Applicable

Note: For Additional Power Backup pay Rs. 20,000/- for 1 KWA